

OFFICIAL



Bureau of Meteorology Agriculture

Jamieson Lowe

Agriculture Segment Lead

0491148987

Jamieson.Lowe@bom.gov.au

OFFICIAL

Our Agriculture Sector

The Bureau has had a dedicated Agriculture Program since July 2017.

The Agriculture Program works with partners in the agriculture sector to deliver impact and value by:

- **Improving weather and climate products and services for the Australian agriculture sector, including providing awareness of existing Bureau services**
- **Gathering feedback from customers in the sector to enable Bureau products to be tailored to priority agriculture needs.**



Long range outlooks and deciles

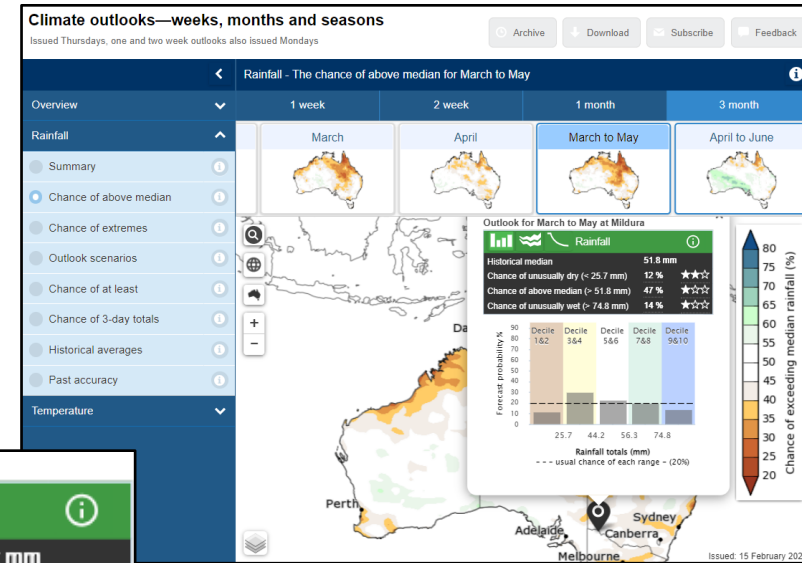
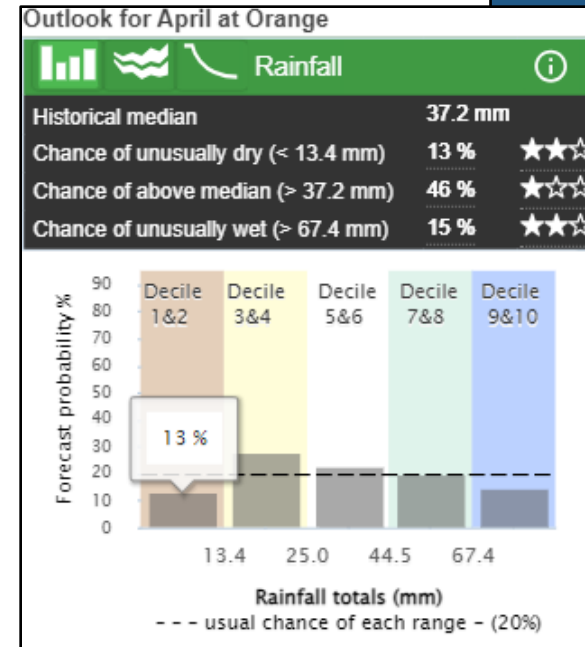
How to get to Climate Outlooks

- www.bom.gov.au
- scroll down to seasonal outlooks (Grey banner)
- select rainfall or temperatures

Understanding the deciles ;

The shaded area in each bar indicates the likelihood of being in five rainfall or temperature bands.

From the lowest 20% of the historical range (far left) through the three bands in between, to the highest 20% (far right).



Long-range forecast overview

Issued: 22 February 2024

- March to May rainfall is likely to be below median for much of northern Australia, western WA and scattered parts of south-eastern Australia.
- March to May maximum and minimum temperatures are likely to very likely to be above median for most of Australia.
- March to May maximum temperatures are at least 3 times more likely than normal to be unusually high for most of the northern half of Australia and Tasmania.
- March to May minimum temperatures are at least 3 times more likely than normal to be unusually high for most of Australia, with the exception of the southern mainland.
- The long-range forecast is influenced by several factors, including record-warm oceans globally and a weakening El Niño. For more details, see the *Climate influences*



What is our Agriculture Section working on?

Agri-Climate outlooks

What is the aim of ACO

- delivering **targeted and relevant information** to growers via a **decision support service**
- delivering **easy-to-use seasonal products** relevant to key **agricultural decisions**
- **providing growers with confidence** in using seasonal products
- **improving the underlying forecast** to further improve trust.

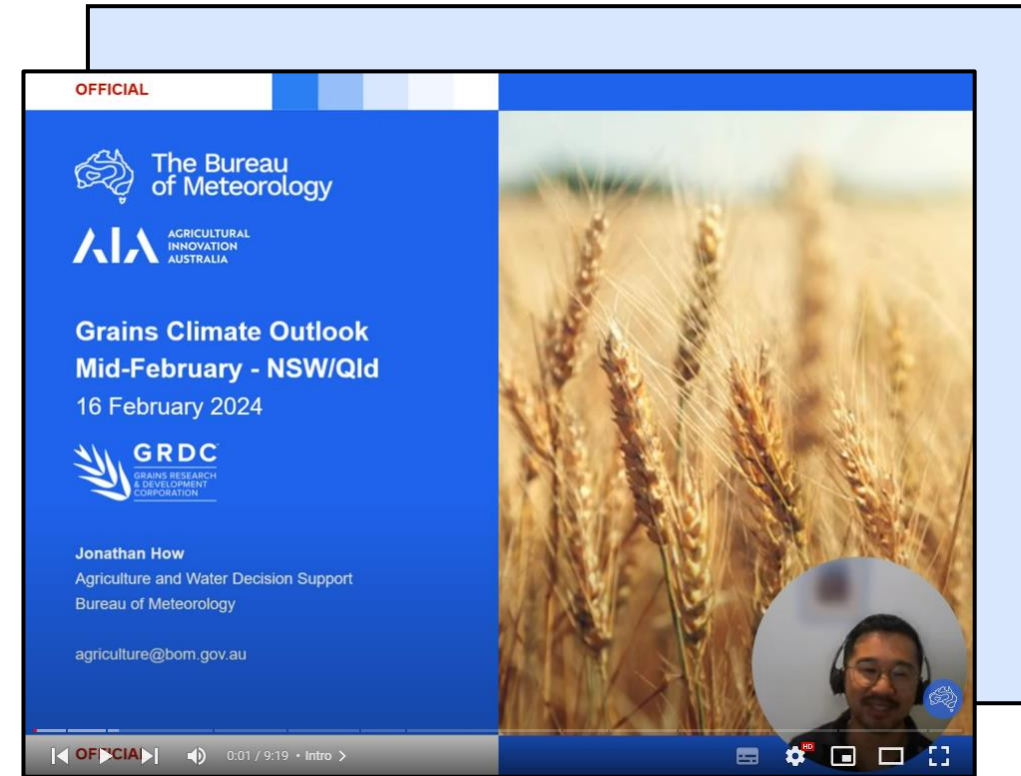
[Agriculture – YouTube](#)

In August 2022, a partnership with [Agricultural Innovation Australia](#) (AIA) enabled additional services to be provided via the agricultural decision support service.

This service is currently available for

- **Grains, Sugarcane, Rice growers**

However this information is transferable, and you can view this material on our Agriculture YouTube playlist.

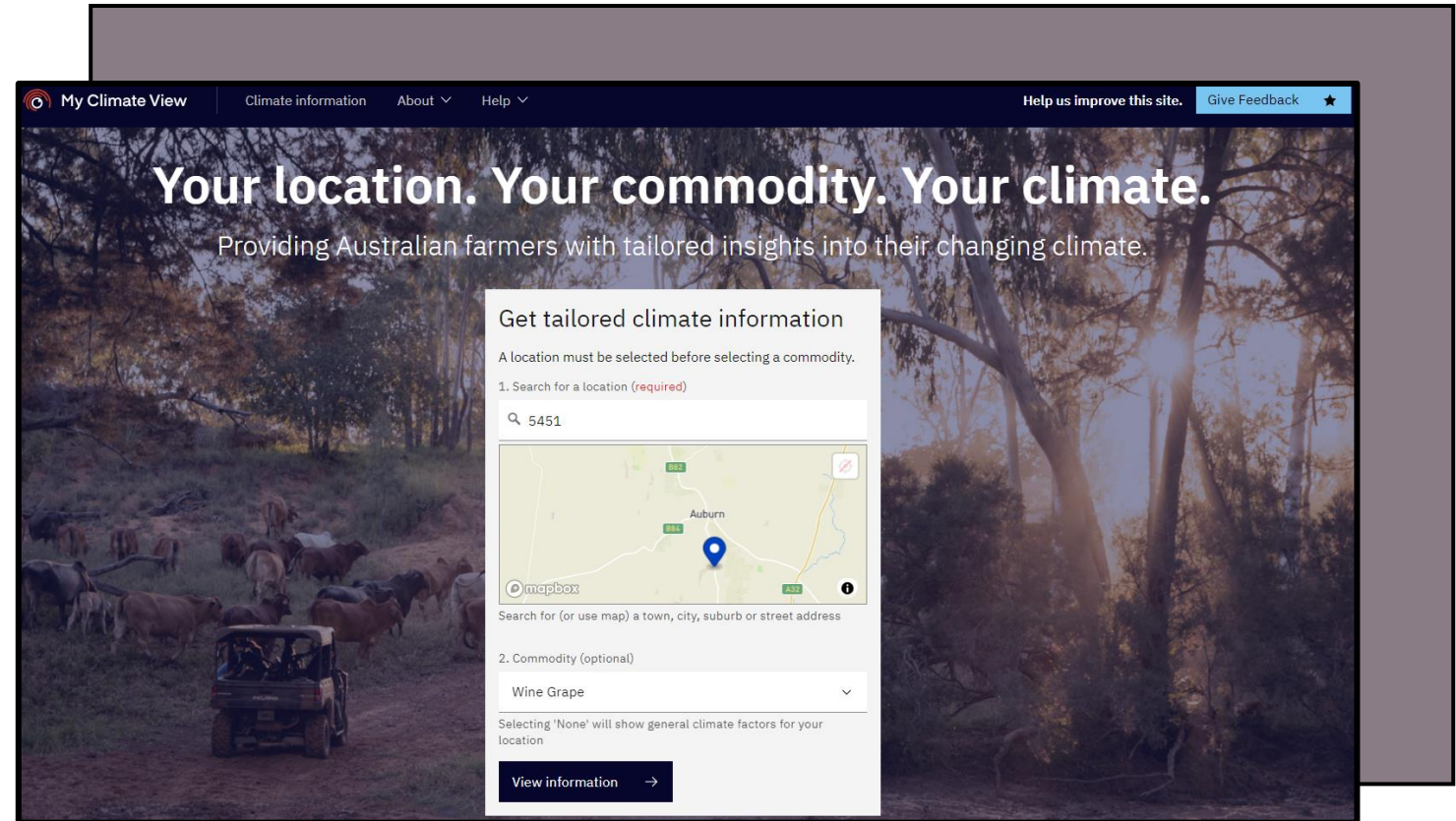


My Climate View

My Climate View enables users to explore climate information relevant to their location and commodity, wherever they are in Australia.

My Climate View is a collaboration between Australia's national science agency [CSIRO](#) and the [Bureau of Meteorology](#), and has been designed together with Australian farmers as part of the Climate Services for Agriculture program thanks to funding from the Australian Government's [Future Drought Fund](#).

"Your location. Your Commodity. Your Climate"



- Quick Demonstration

[My Climate View](#)



Key Takeaways



There are many climate drivers, their timing and differing interactions means no two climatic events are identical



What is the general seasonal trend of my area – [Overview—Summary - Climate Outlooks \(bom.gov.au\)](#)



What is my farm going to be like in years to come – [My Climate View](#)



If in doubt please reach out



Agriculture@bom.gov.au

